



20
YEARS OF PRINT
POSSIBILITIES

Giving Shape to Ideas

AccurioPress C14010/S series

In-depth look



WHITE TONER

C14010S and C12010S – Special Toner

High concealment

Fine gradations

(White)

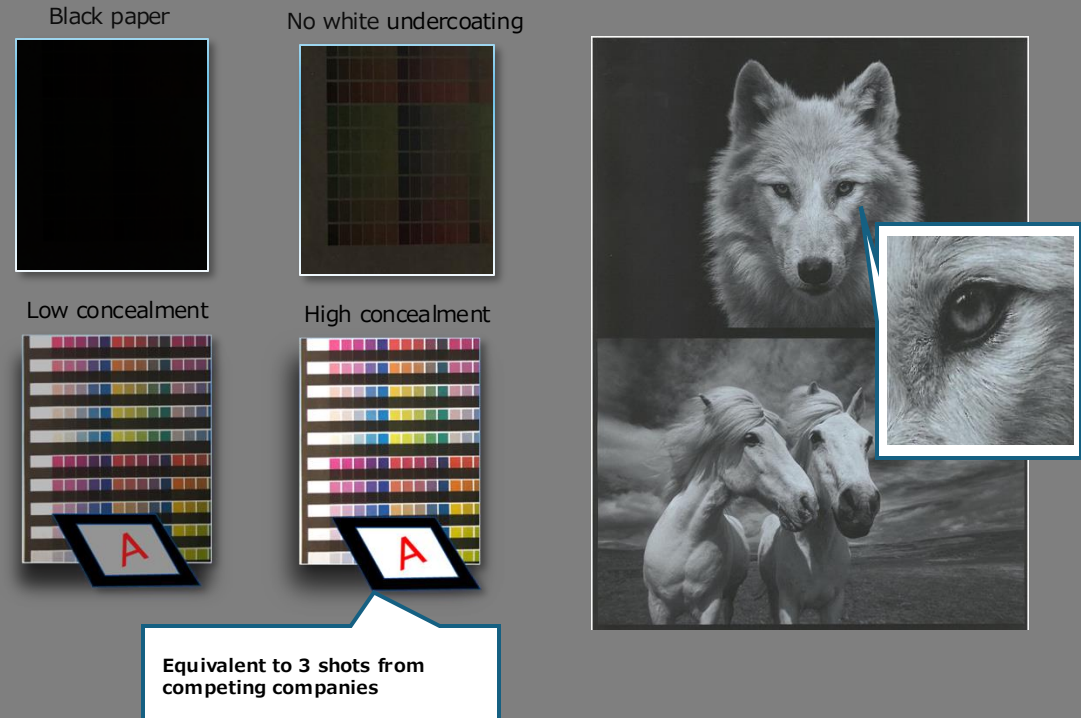
Inclusion of Special Toner

The C14010S and C12010S engines specifically have a 5th color station allowing for White Toner laydown.

White toner is always the first color that will be printed onto a sheet. This allows for CMYK toner to laydown on top of the White toner.

With the inclusion of special toner, it can offer high concealment (low transparency), reproduce gradations, and still provide productivity as high as 120 ppm.

This allows for multi-colored expressions on clear and different colored media.



Black paper

No white undercoating

Low concealment

High concealment

Equivalent to 3 shots from competing companies

The image shows four panels. Top-left: 'Black paper' is a solid black square. Top-right: 'No white undercoating' shows a grid of colors on black paper with significant transparency. Bottom-left: 'Low concealment' shows a color calibration chart on black paper with visible transparency. Bottom-right: 'High concealment' shows the same chart with much less transparency. A callout box points to the high concealment chart with the text 'Equivalent to 3 shots from competing companies'. To the right of these panels are two images of a white wolf and two images of white horses, demonstrating fine gradations and high productivity.

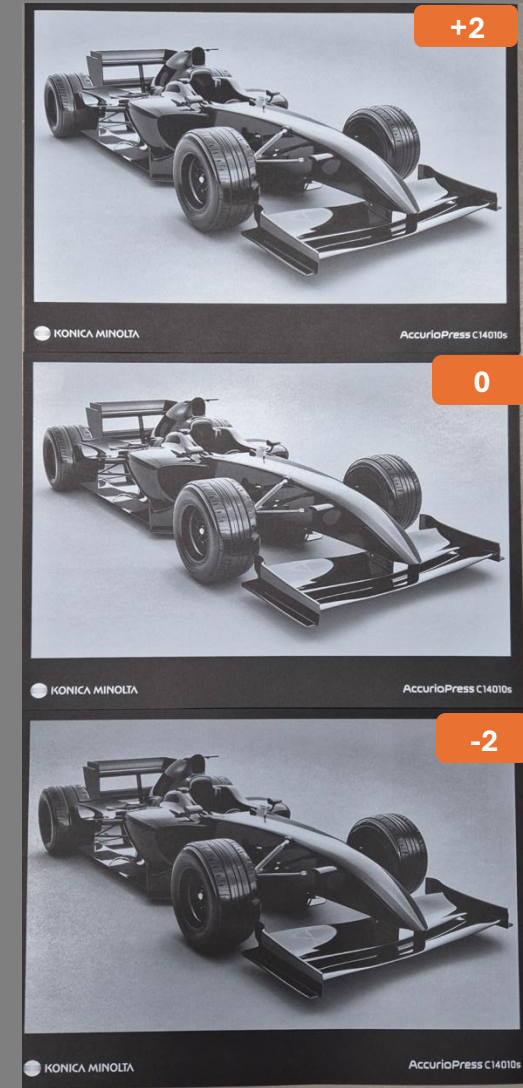
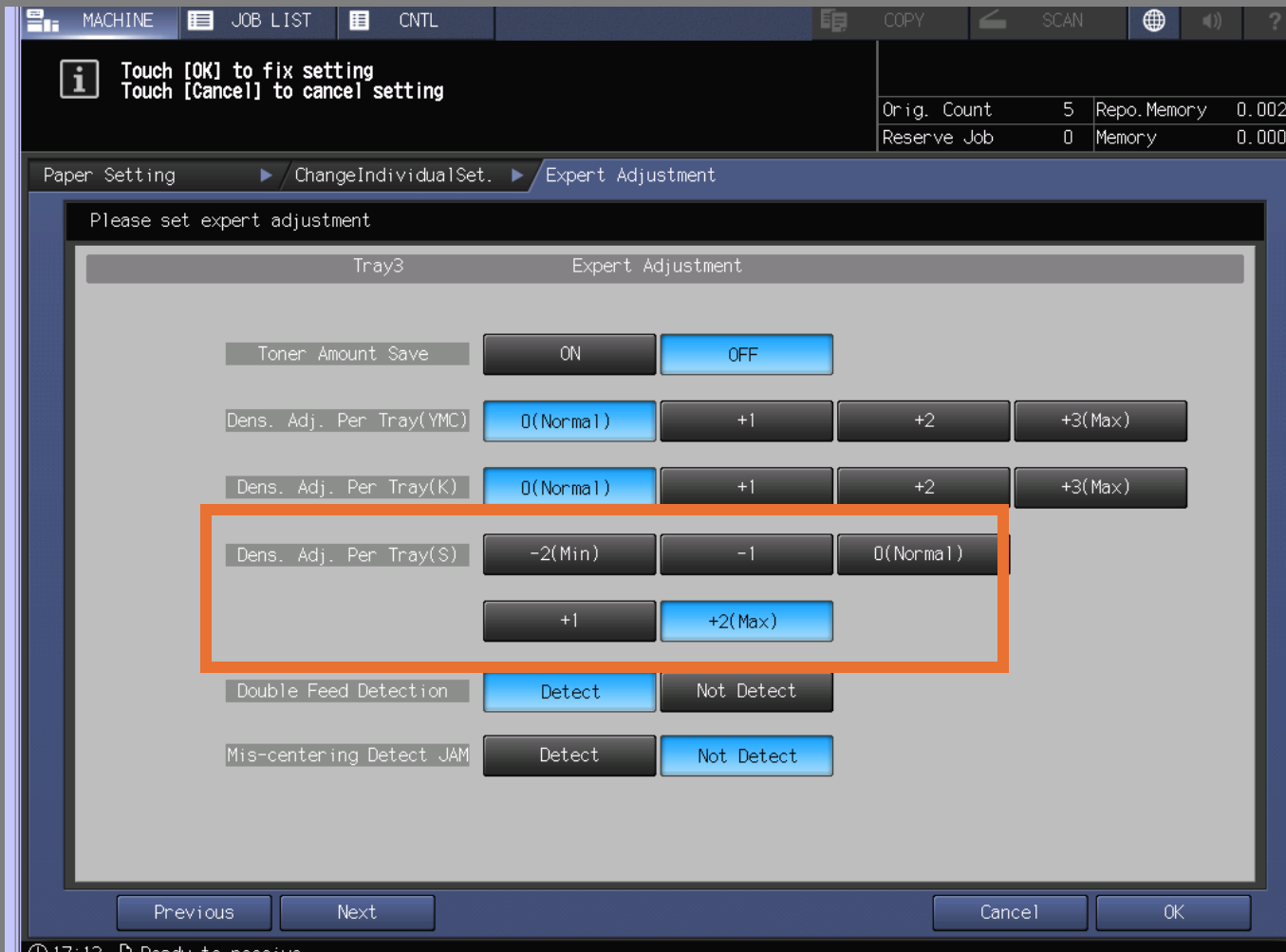
High productivity



*C14010S and C12010S print laydown white toner at 120ppm

Special Toner (White)

White Toner strength is quickly adjustable based on customer needs at the engine control Panel.



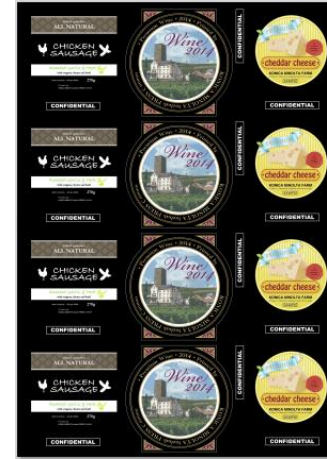
Special Toner (White)

White Toner Generation Functions

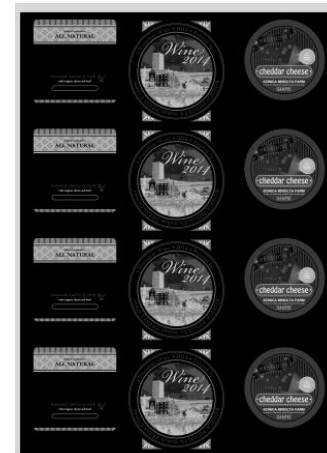
Multiple ways to evoke White toner for printing

- If Spot color is present in file, that Spot color can be used to determine white toner laydown
- Entire background of sheet can be printed in White toner
- Select type of objects can be determined to be printed in White toner, (ie Text, Graphics, Images.)

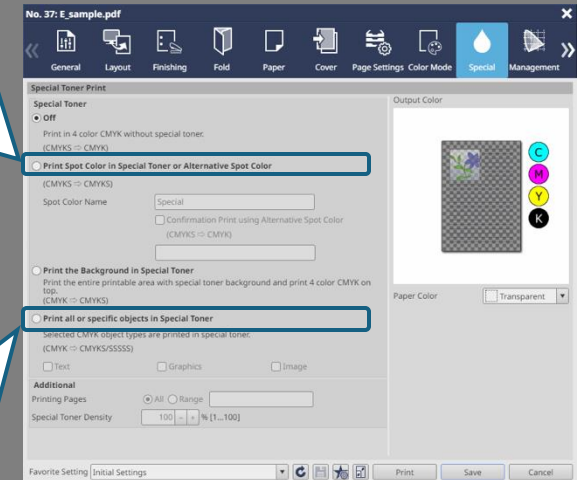
Print Spot Color in Special Toner or Alternative Spot Color



Print all or specific objects in Special Toner

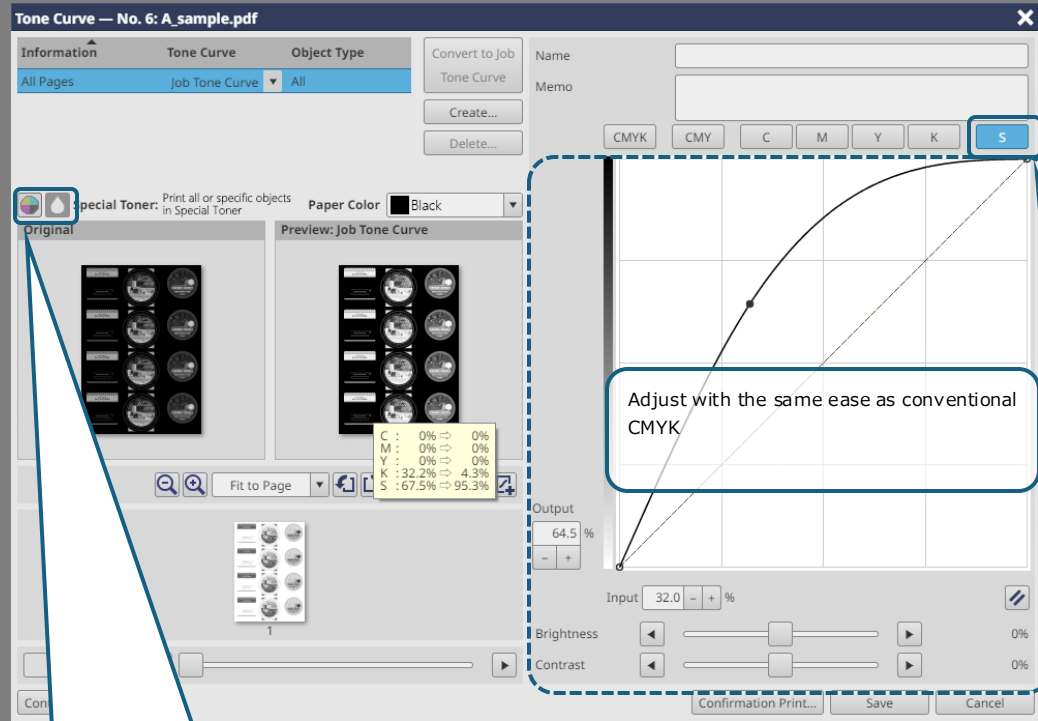


AccurioPro PrintManager screen



Special Toner (White)

AccurioPro PrintManager screen



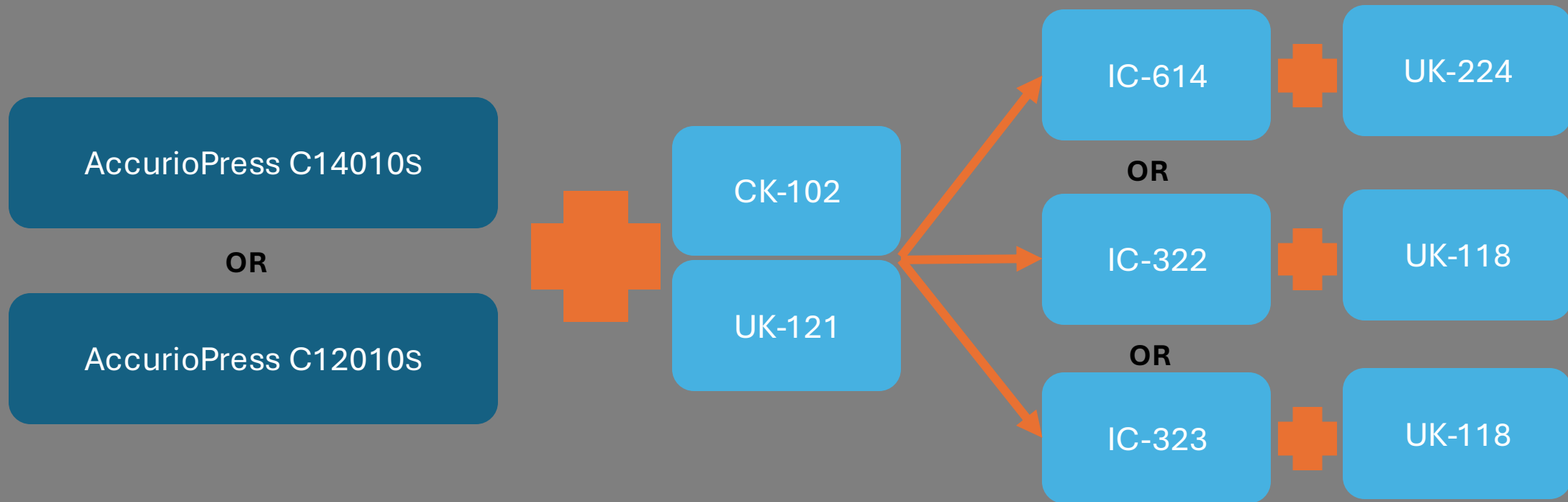
(1) Specify the colors to be shown (CMYK, S)

(2) Set special toner (S) individually

Tone Curve Adjustment for White Toner

It is now possible to adjust the White toner half tones using the tone curve adjustment screen with the same ease of operation as the conventional CMYK.

White Toner Required Articles



Special Toner (Controllers)

The use of a Conversion Kit is required to be added for KM and Fiery controllers when attached to a C14010S and C12010S systems.

The 5th color conversion kit gives the Image Controllers the capability to process the additional color and interpret the data correctly.

	Conversion Kit for White Toner
KM IC-614	UK-224 KM Controller 5 th Color Kit
Fiery IC-322/323	UK-118 Fiery Controller 5 th Color Kit

UK Kits (Controllers)

KM UK kits with IC-614

KM Image Controller IC-614		Video Interface Kit VI-515	Video Interface Kit VI-514	5th Color Kit for Main Body UK-121	5th Color Kit for Own Controller UK-224
	IC-614	-	-	For expansion	For expansion
	IC-614 + IQ-601	-	Required	For expansion	For expansion
	IC-614 + IQ-601 + AI-101	Required	Required	For expansion	For expansion

Fieri UK kits with IC-322 and IC-323

IC-322 Standard Controller		Video Interface Kit VI-515	Video Interface Kit VI-514	5th Color Kit for Main Body UK-121	5th Color Kit for Fieri Controller UK-118
	IC-322 / IC-323	Required	-	For expansion	For expansion
IC-323 Premium Controller	IC-614 + IQ-601	Required	Required	For expansion	For expansion
	IC-614 + IQ-601 + AI-101	Required	Required	For expansion	For expansion

Creo with IC-320

IC-320 WY2 model is specifically designed for use of White Toner		Video Interface Kit VI-515	Video Interface Kit VI-514	5th Color Kit for Main Body UK-121	5th Color Kit not needed for CREO Controller
	IC-320	Required	-	For expansion	-
	IC-614 + IQ-601	Required	Required	For expansion	-
	IC-614 + IQ-601 + AI-101	Required	Required	For expansion	-